

Pwoteje tèt ou kont pestisid yo

IJANS!

Jwenn èd medikal ki sou plas.



Non:

Adrès:

Nimewo telefòn:

Si w ta bezwen yon anbilans, di yo kote ou ye.



Non lokal la:

Zòn lokal la:

Si w gen kesyon oswa enkyetid, rele otorite pestisid yo.



Non ta a/branch oswa ajans ki responsab kontwòl pestisid pou popilasyon:

Adrès:

Nimewo telefòn:

POU ENFÒMASYON SOU TRETMAN MEDIKAL, RELE SANT KONTWÒL PWAZON: 1-800-222-1222

This poster contains pesticide safety information that is required under the Worker Protection Standard as revised in 2015, 40 CFR 170.311(a) (3) (i-x).

This work is licensed under a Creative Commons Attribution-NonCommercial-ShareAlike 4.0 International License. ©2018 The Regents of the University of California, Davis campus. For information contact PERCSupport@ucdavis.edu.



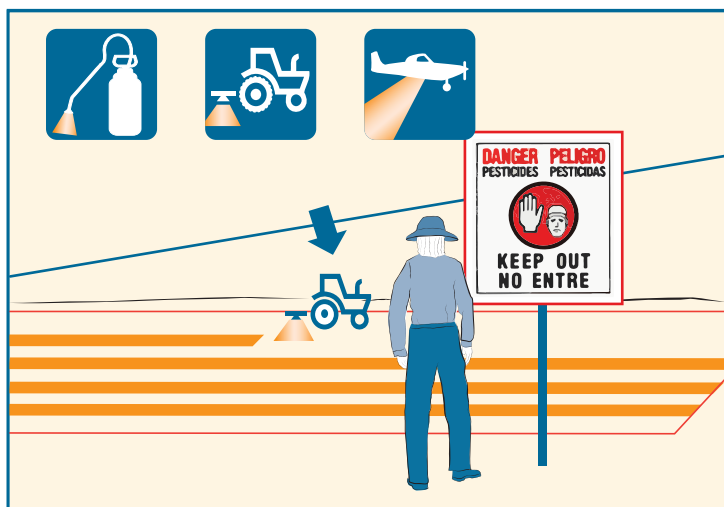
This publication was developed under Cooperative Agreement No. X8-83616301 awarded by the US Environmental Protection Agency to University of California, Davis Extension, in cooperation with Oregon State University. EPA made comments and suggestions to improve its scientific analysis and technical accuracy. However, the views expressed in this document are those of its authors and do not necessarily represent the views and policies of the EPA. EPA does not endorse any products or commercial services mentioned in this publication.



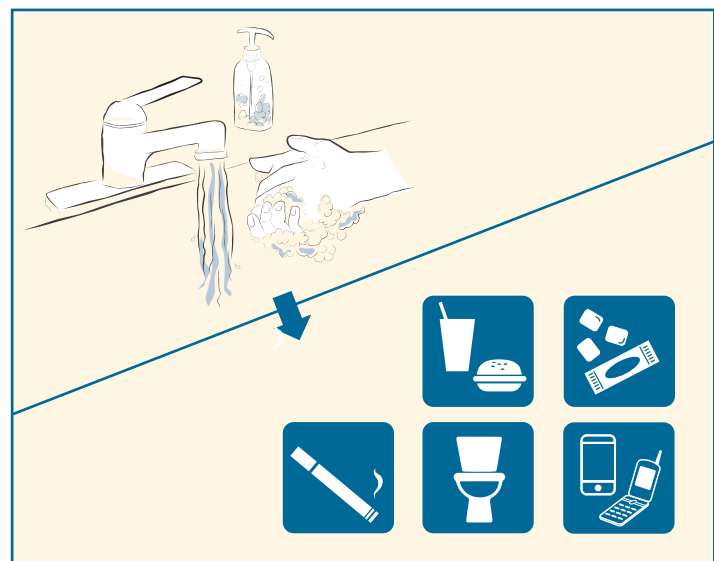
Evite pou pestisid yo pa kontre ak po w oubyen ak kò ou. Pestisid yo kapab nan plizyè kote. Yo kapab sou plant yo, andedan plant yo, nan tè, dlo ki sèvi pou wouze jaden. Pestisid yo kapab soti nan lè a, tou pre kote yo fè aplikasyon li. Konsa tou, yo kapab soti nan traktè ak lòt materyèl yo. Ou kapab jwenn pestisid yo tou nan linèt, gan, bòt ak lòt ekipman pou pwoteksyon pèsònèl.



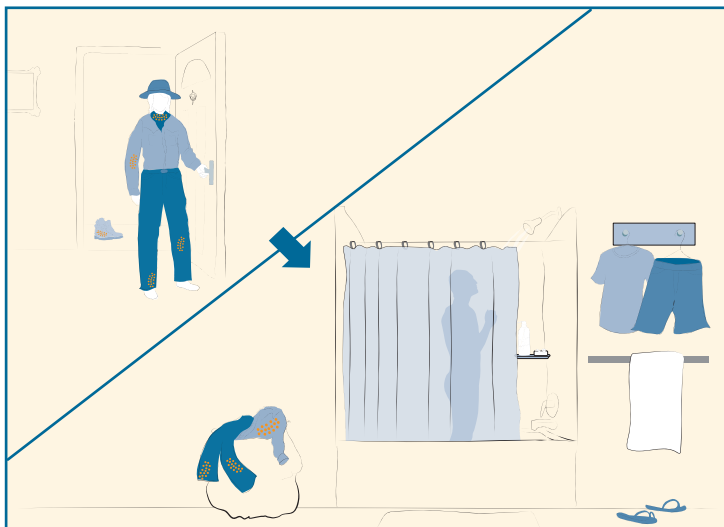
Pwoteje kò ou kont kras pestisid la. Mete chemiz manch long ak pantalon long lè w ap travay. Epi tou, mete soulye, chosèt ak chapo oubyen foula.



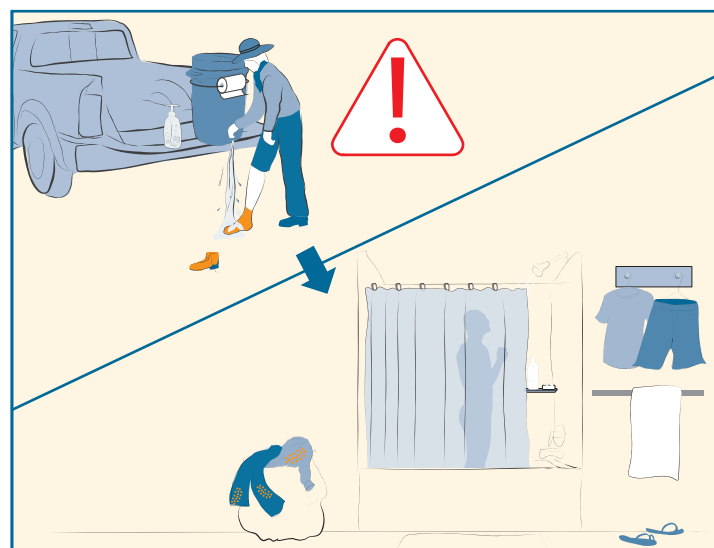
Rete lwen nan zòn ki trete yo lè yo di w sa, e nenpòt lè ou wè afich ki di sa. Lè ou wè y ap fè aplikasyon pestisid, rete lwen. Moun k ap fè aplikasyon an dwe sispann travay si li wè ou twò pre.



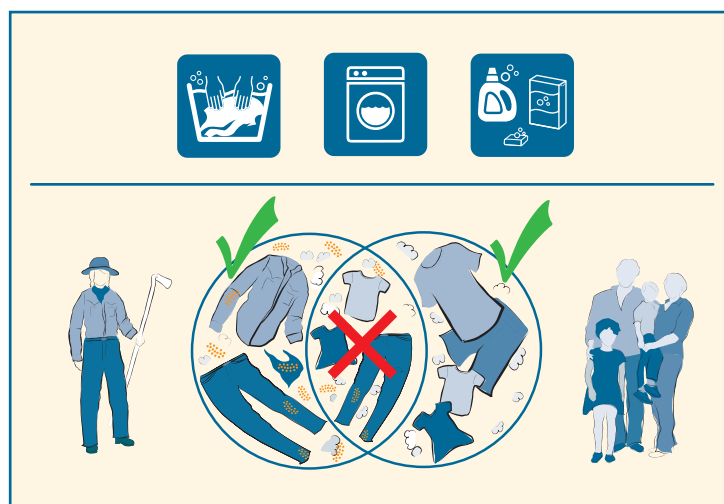
Lave men w anvan ou manje, bwè oubyen moulen chiklèt. Menm jan tou, lave men w anvan w fimen, sèvi ak twalèt oubyen itilize telefòn.



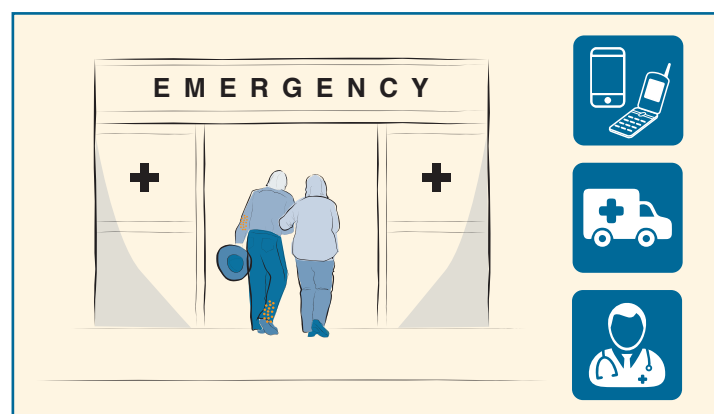
Lave kò w ak cheve w avèk savon oubyen chanpou tou swit aprè w fin travay; epi mete rad ki pwòp.



Lè pestisid yo tonbe oswa flite sou kò ou, benyen lapoula. Dlo, savon ak sèvyè dwe disponib. Sèvi ak dlo pwò ki tou prè w la, tankou sous, dlo kouran ak lak si yo tou prè ou. Apre sa, lave kò w ak cheve w avèk savon oubyen chanpou pi vit ou kapab. Mete sou ou rad ki pwòp.



Lave rad travay ou avan ou mete yo ankò. Lave yo pou kont yo. Pa melanje yo ak lòt rad.



Chèche èd medikal pi vit posib si w panse pestisid lakòz yon blesi oswa yon maladi.

Ou gen kesyon sou pestid? Rele nan 1-800-858-7378 (Sant Enfòmasyon Nasyon Pestisid)